

SIGNATURE

NORTH EAST

OFFICIALLY RATED THE NO.1 ESTATE AGENT IN THE NORTH EAST





📍 Carlton Road, Newcastle Upon Tyne NE12 8BE

Carlton Road, Newcastle Upon Tyne NE12 8BE

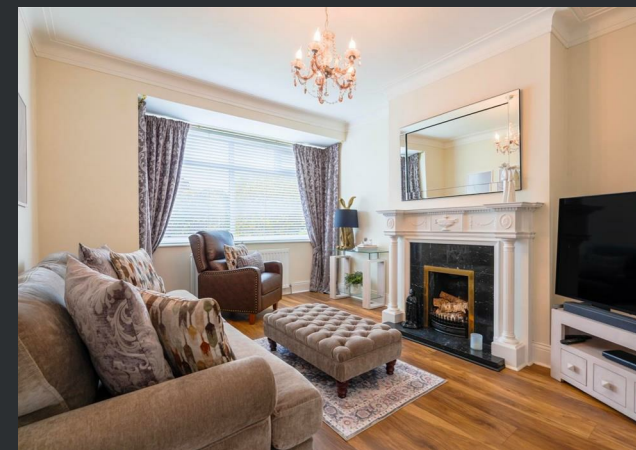
Asking Price
£380,000

Signature North East are delighted to welcome this well-presented three-bedroom semi-detached, double fronted corner home to the market, ideally located in Benton. This fantastic property enjoys a prime position within walking distance of both Four Lane Ends and Benton Metro stations, providing excellent transport links across the North East, including easy access to Newcastle city centre and the coast. Situated just off Front Street leading to Gosforth, the home benefits from a wide range of local amenities. It is also perfectly suited to families, with well-regarded schools nearby including Longbenton High School and St. Mary's Catholic School.

Upon entering, you are welcomed via a central hallway leading into the dining room, where a charming fireplace creates a lovely focal point and large windows allow for an abundance of natural light. The spacious living room follows, offering ample room for a range of furnishings, complete with a striking fireplace and a large window that enhances the bright and airy feel. The kitchen flows seamlessly into a conservatory area, forming an open-plan space that is both light and inviting. The kitchen is fitted with a range of base and wall units, sleek worktops, and a breakfast bar ideal for casual dining, along with integrated appliances including a double oven, microwave, coffee machine, and fridge freezer. The conservatory provides a relaxing setting, with elegant French doors opening out to the garden. A convenient W.C. completes the ground floor.

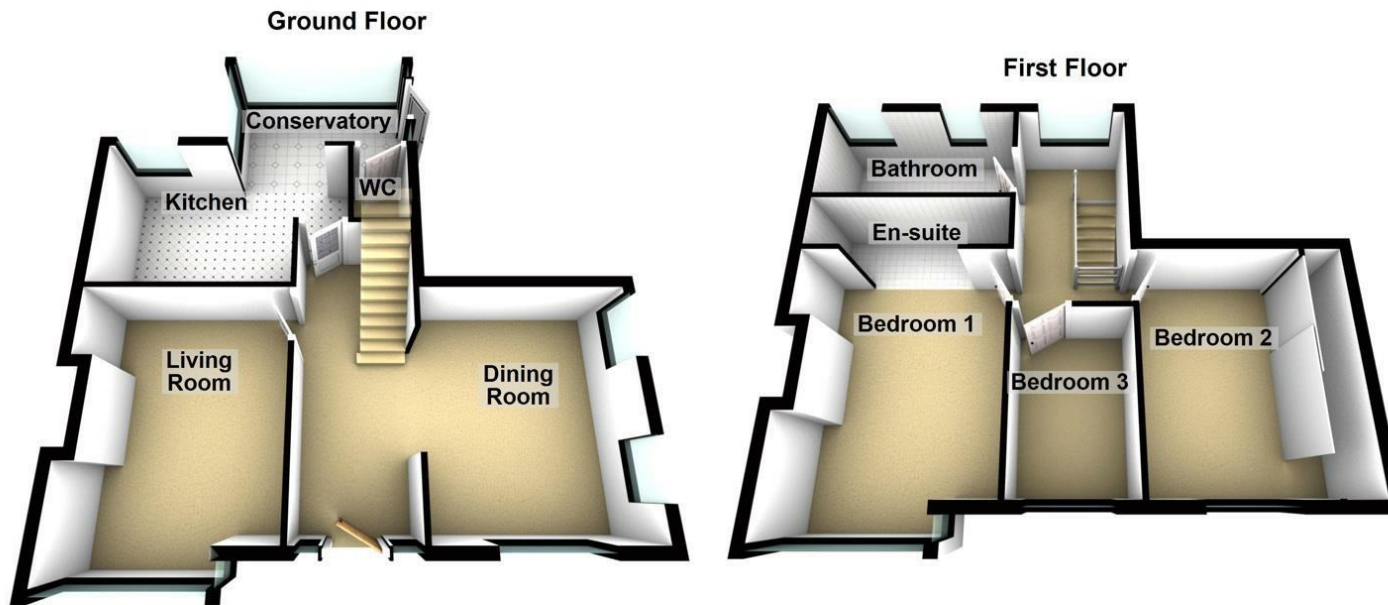
To the first floor, there are three bedrooms. Bedrooms one and two comfortably accommodate double beds and additional furnishings, with the principal bedroom benefitting from an ensuite comprising a shower, W.C. and hand basin. Bedroom two also features fitted sliding door wardrobes. Bedroom three is ideal as a single bedroom with additional furnishings. The accommodation is completed by a stylish family bathroom fitted with a bathtub, handheld shower, hand basin and W.C.

Externally, the property boasts a generous garden mainly laid to lawn, along with a decking area that is perfect for outdoor furniture and entertaining. Further benefits include off-street parking via a driveway and a garage, adding to the practicality of this fantastic home.



PLEASE NOTE THAT THE VENDOR HAS CERTIFIED THE PROPERTY INFORMATION AND IMAGES.

PROPERTY FLOORPLAN



Total area: approx. 112.4 sq. metres (1210.0 sq. feet)

Measurements:

Living Room
13'1" x 11'4"

Dining Room
13'1" x 11'1"

Kitchen
9'0" x 14'6"

Conservatory
10'11" x 6'0"

WC
3'3" x 5'7"

Bedroom One
13'1" x 11'1"


En Suite
11'1" x 2'11"

Bedroom Two
13'1" x 8'10"

Bedroom Three
6'7" x 9'10"

Bathroom
5'8" x 11'0"

Energy Efficiency Rating

	Current	Potential
Very energy efficient - lower running costs		
(92 plus) A		
(81-91) B		
(69-80) C	70	77
(55-68) D		
(39-54) E		
(21-38) F		
(1-20) G		
Not energy efficient - higher running costs		
England & Wales		EU Directive 2002/91/EC 





More 5 Star Customer Reviews than any other Agent based in the North East on allAgents.co.uk



SALES

LETTINGS

FINANCE

LAW

WE COVER THE WHOLE OF THE NORTH EAST

Whitley Bay
0191 251 3344

Cramlington
01670 897 213

Tynemouth
0191 296 6689

Morpeth
01670 513 966

Ponteland
01661 820 082

Wallsend
0191 432 4151

Alnwick
01665 511 800

Heaton
0191 432 4275

Forest Hall
0191 266 9966

Other locations
0191 640 3523

Newcastle
0191 640 2284

Durham
0191 303 8252

Gosforth
0191 640 3523

Sunderland
0191 543 6390

Whickham
0191 432 5102

Gateshead
0191 432 4294

Jesmond
0191 281 1037

Killingworth
0191 640 3602

Ryton
0191 413 9845

Head Office &
Lettings
0191 253 4815

*Highest recommended 5-star reviews than any other Estate Agent based in the North East on allAgents.co.uk - The UK's Largest Customer Review Website for the Property Industry & Awarded Best Estate Agency 2018 & 2019 - North East England by SME News